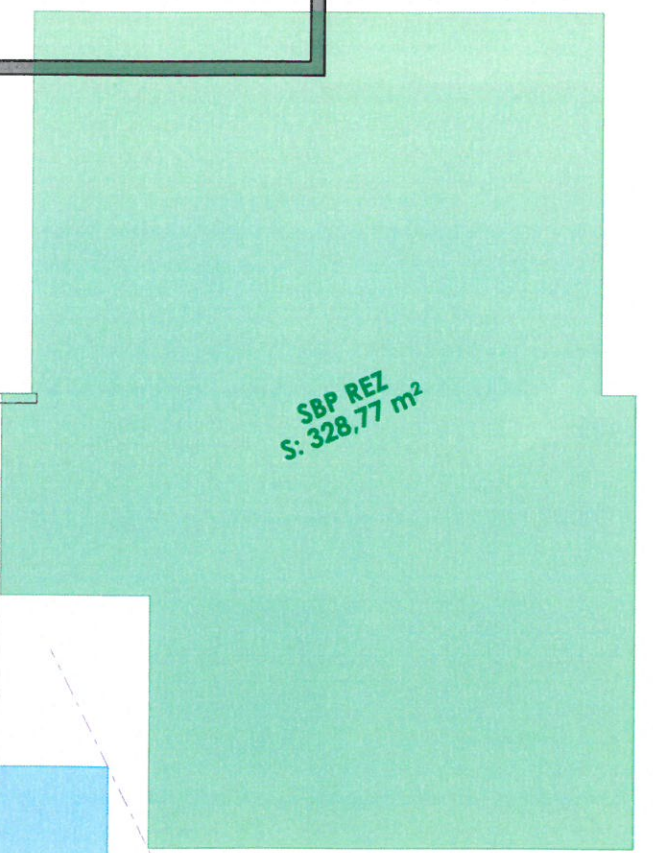
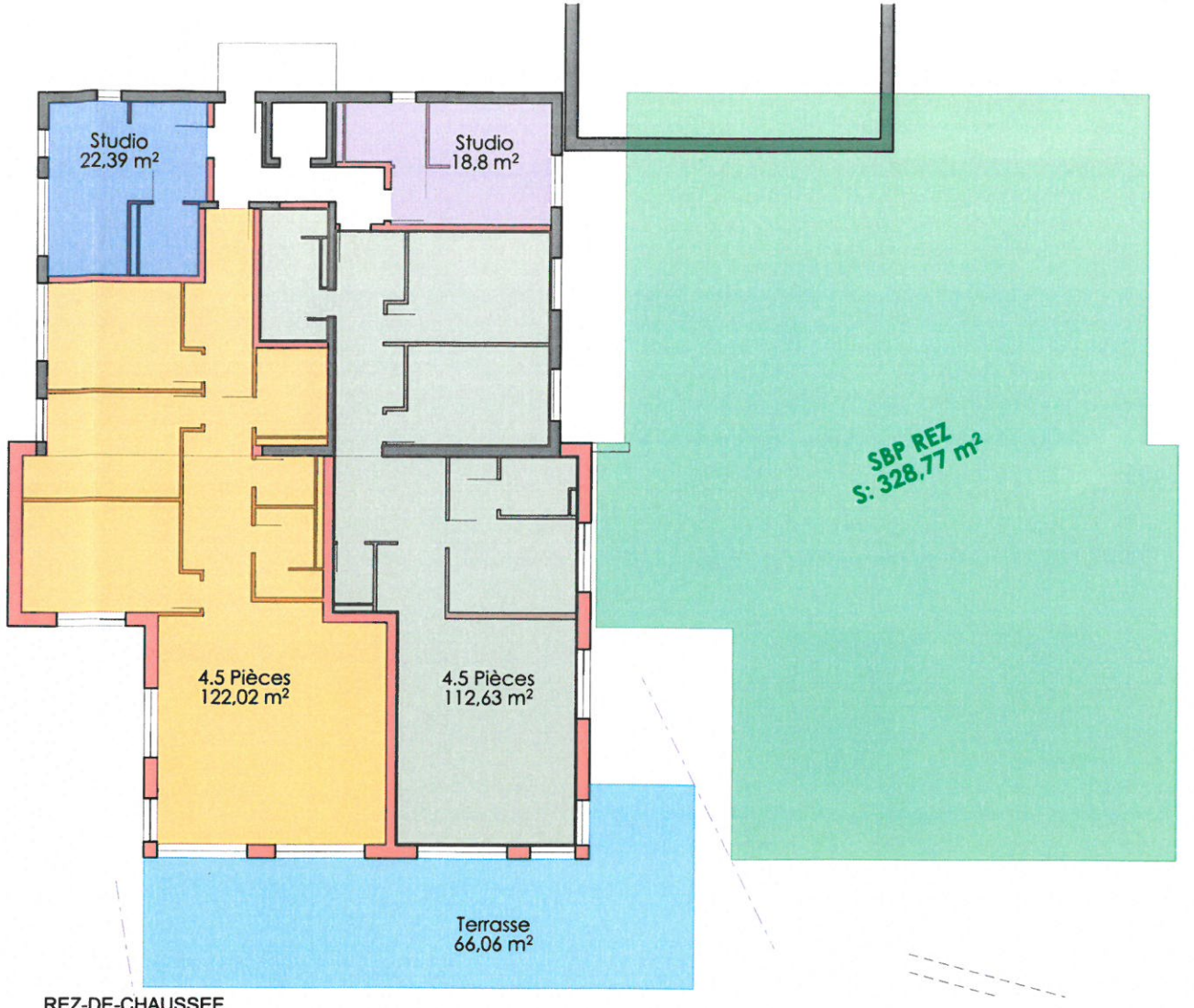
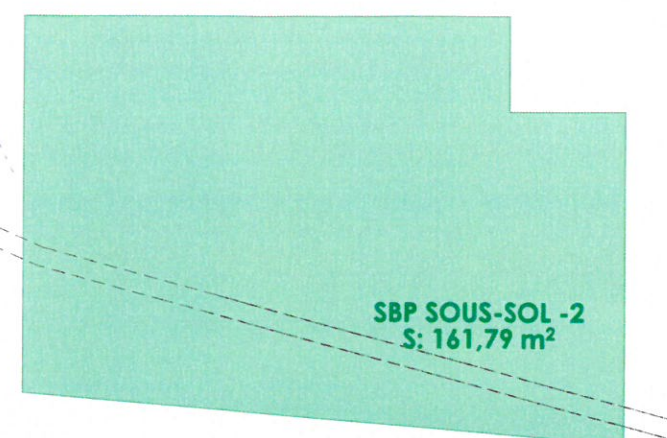
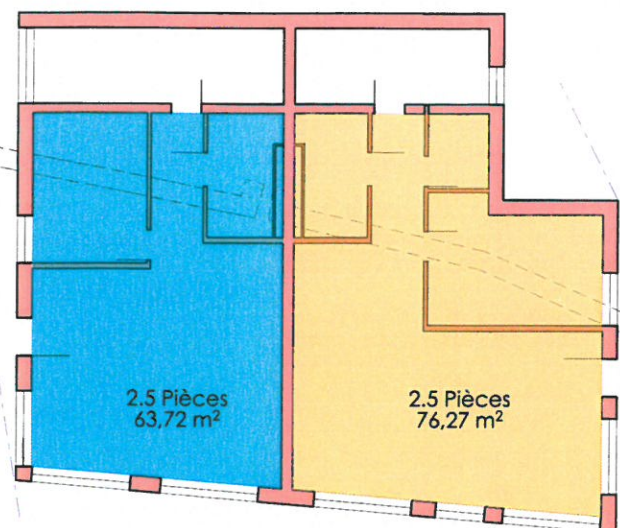


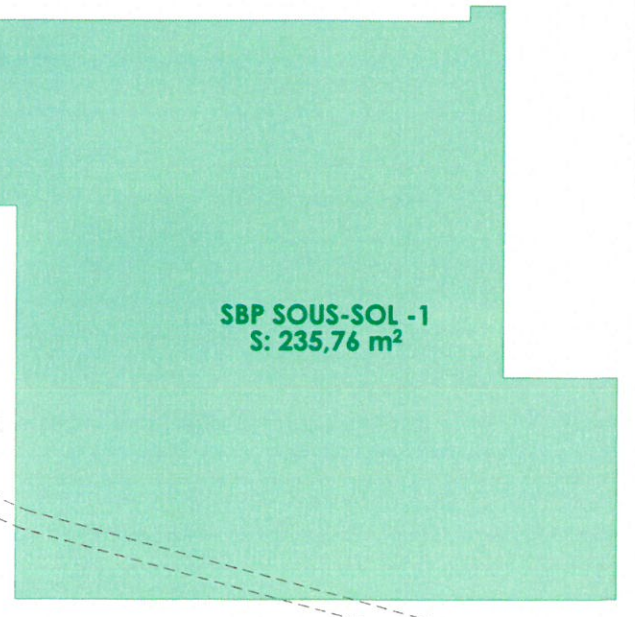
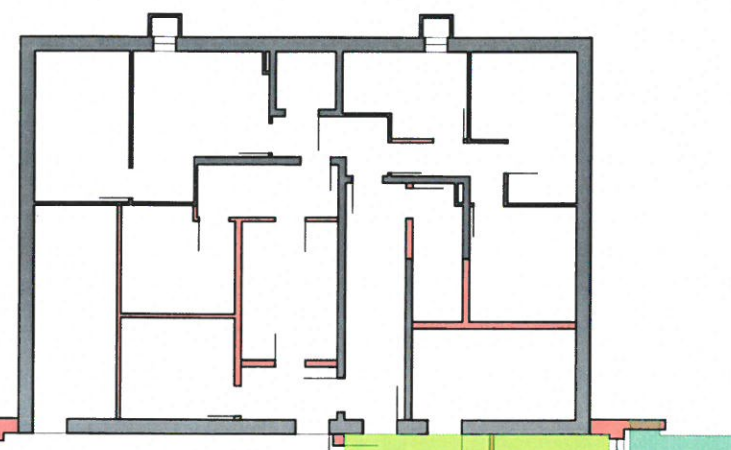
SIGNATURES

Le Propriétaire

L'architecte:

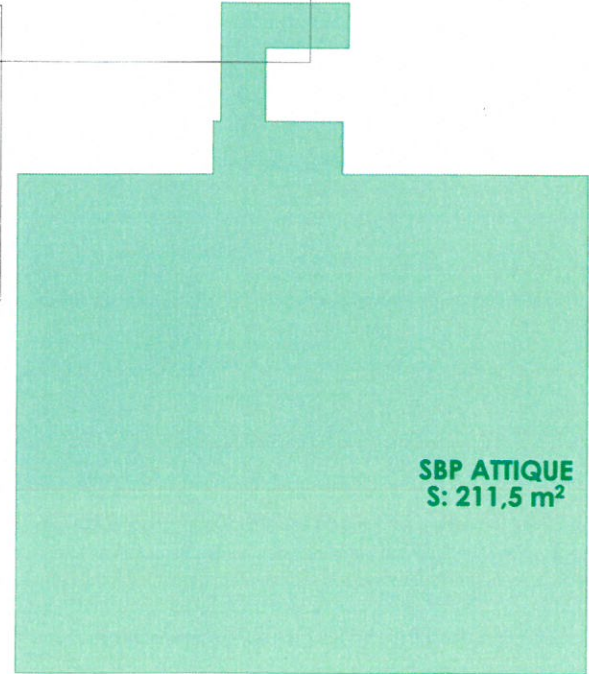
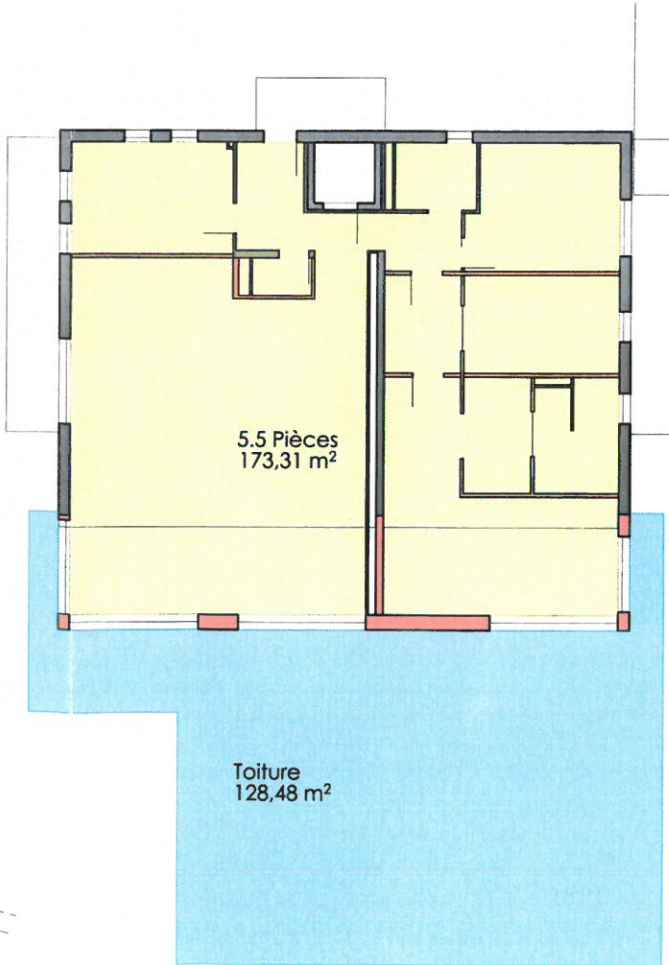
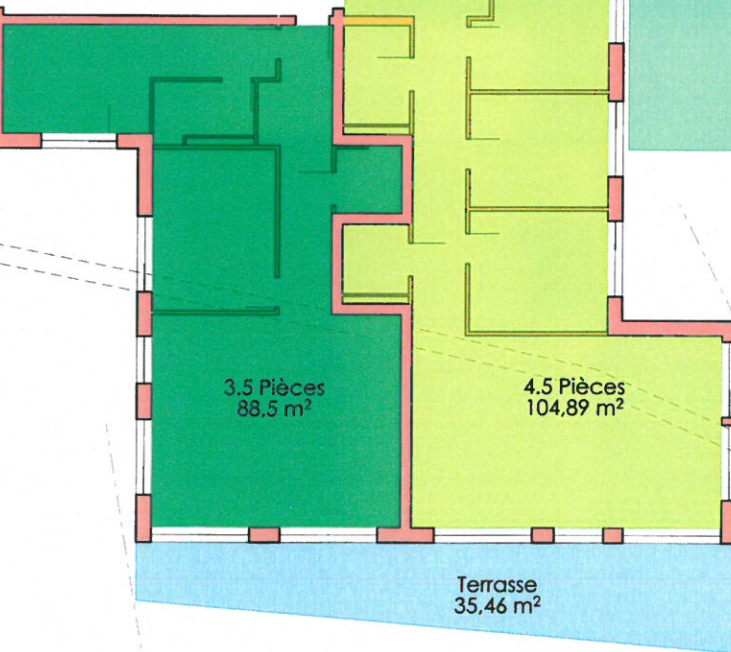


SOUS-SOL



SBP TOTALE
SS -1 = 161.79 m²
REZ INF = 235.76 m²
REZ = 328.77 m²
ATTIQUE = 211.5 m²
SBP = 937.82 m²
1619 * 0.6 = **971.4 m²**

REZ INFERIEUR



ATTIQUE

Maitre d'ouvrage: **GAF SA**
Maitre d'oeuvre: **Atelier d'architectes V.Sgarzi SA**
Avenue Général-Guisan 44,1009 Pully
Parcelle 120 - ECA 446 - Rte. Simplicon 51 - Paudex
N° de plan: **03 Surfaces Brutes de Plancher**
Titre:
Echelle: **1:200**
Format: **A1**
N° de projet: **562**
Dessinateur: **DS**
Date: **12.03.2026**
Etat du projet: **ENQUETE**